



Made in
New York

DOMESTIC DIVISION

DOMESTIC PRODUCTION

**GARMENT CATEGORIES: KNITS & WOVENS
TOPS, BOTTOMS & DRESSES**

**SPEED TO MARKET
21 - 40 DAY PRODUCTION LEAD TIMES**

**500K YARDS OF FABRIC STOCK POSITIONING IN
LOS ANGELES & NEW YORK**

**3 INSPECTED AND COMPLIANT SEWING FACTORIES WITHIN
10 MILES OF NYC**

STATE OF THE ART CUTTING FACILITY

**PRODUCTION CAPACITY OF
200K UNITS PER MONTH**



FABRIC PROCESSING - LOS ANGELES LOCATION



KNITTING DIVISION

- TOP OF THE LINE ORIZO AND PAULING CIRCULAR KNITTING MACHINES

DYEING FACILITY

- BRAZOLI MACHINES
- COTTON AND COTTON/POLYESTER BLENDS



FABRIC WASHING & FINISHING

- SANTEX FINISHING RANGE

FABRIC PRINTING

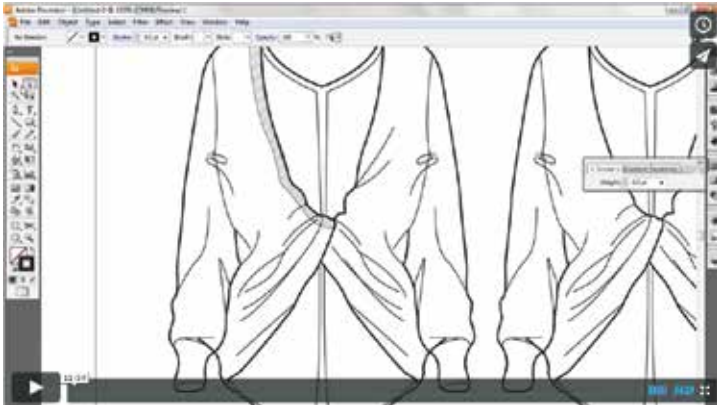
- 5 - 7 DAY FABRIC PRODUCTION

DESIGN & MERCHANDISING - NY LOCATION



DESIGN & MERCHANDISING

- TIME & ACTION CALENDAR
- TREND RESEARCH & ANALYSIS
- LIVE STREAM RUNWAY SHOWS
- COMPETITIVE SHOPPING
- PRODUCT INTELLIGENCE & INNOVATION
- FIXTURE PLANNING & ASSORTMENT



CAD CAPABILITIES

- SKETCHING & FILLED BODIES
- ARTWORK REPEATS & COLORWAYS
- EXTENSIVE LIBRARY OF PRINTS
- PACKAGING & LABEL DESIGN

TECHNICAL SUPPORT

- SPECS AND FIT COMMENTS

APPROVED RETAILERS

 Macy's logo featuring a red star and the word "macy's" in a lowercase, sans-serif font.

JCPenney logo in a red, sans-serif font.

 Avenue logo with the word "avenue" in a bold, lowercase, sans-serif font and the tagline "WOMEN'S FASHION IN SIZES 14 TO 32" in a smaller font below it.

R & M RICHARDS

 Stein Mart logo in a green, cursive script font.

 Ashley Stewart logo featuring the words "ASHLEY" and "STEWART" in a sans-serif font with a large, stylized pink "AS" monogram in the center.

bebe logo in a bold, lowercase, sans-serif font.

DAVID'S BRIDAL logo in a bold, black, serif font.

CATHERINES[®]
PLUS SIZES logo in a bold, blue, serif font.

